

Pressure Raman effects and internal stress in network glasses

Fei Wang,* S. Mamedov,† and P. Boolchand

Department of Electrical and Computer Engineering and Computer Science, University of Cincinnati, Cincinnati, Ohio 45221-0030, USA

B. Goodman

Department of Physics, University of Cincinnati, Cincinnati, Ohio 45221-0011, USA

Meera Chandrasekhar

Department of Physics, University of Missouri-Columbia, Missouri 65211, USA

(Received 3 March 2005; published 17 May 2005)

Raman scattering from binary $\text{Ge}_x\text{Se}_{1-x}$ glasses under hydrostatic pressure shows onset of a steady increase in the frequency of modes of corner-sharing GeSe_4 tetrahedral units when the external pressure P exceeds a threshold value P_c . The threshold pressure $P_c(x)$ decreases with x in the $0.15 < x < 0.20$ range, nearly vanishes in the $0.20 < x < 0.25$ range, and then increases in the $0.25 < x < 1/3$ range. These $P_c(x)$ trends closely track those in the nonreversing enthalpy, $\Delta H_{nr}(x)$, near glass transitions (T_g), and in particular, both $\Delta H_{nr}(x)$ and $P_{c(x)}$ vanish in the reversibility window ($0.20 < x < 0.25$). It is suggested that P_c provides a measure of stress at the Raman-active units, and its vanishing in the reversibility window suggests that these units are part of an isostatically rigid backbone. Isostaticity also accounts for the nonaging behavior of glasses observed in the reversibility window.

DOI: 10.1103/PhysRevB.71.174201

PACS number(s): 62.50.+p, 61.43.Fs, 63.50.+x

I. THREE ELASTIC PHASES IN NETWORK GLASSES

The nature of the glass transition continues to be a challenging issue in condensed-matter science.¹ Multicomponent network glasses exhibit striking trends with composition in certain regions of connectedness,² as defined by their mean coordination number (\bar{r}). Chalcogens alloyed with Group IV and V elements of similar size and possessing a mean coordination number in the range $2 < \bar{r} < 3$ represent some of the best inorganic glass formers in nature. The general picture³ is that, on quenching a glass-forming liquid, structural arrest begins somewhat above the glass transition temperature T_g and continued further freezing of local structures takes place below T_g . The resulting frozen-in variations in bond lengths of a given type, which exist throughout the network of the glass, means that the structural backbone itself contains locally stressed regions. Relaxation⁴ of these regions over time leads to aging effects and also to hysteretic behavior² upon thermal cycling across T_g .

Until recently, such relaxation was thought to be a universal property of a glass. However, in a region of optimal coordination ($\bar{r} \sim 2.4$), glasses have been found to behave differently from that expectation,^{2,5-9} in that their aging is greatly suppressed and the glass transition is thermally reversing in character. The value of $\bar{r} \sim 2.40$, the so-called mean-field value, is valid, to a first approximation, when the average number of local valence bond-stretching and bond-bending force constraints (n_c , Lagrangian constraints) on an atom coincide¹⁰⁻¹² with its translational degrees of freedom, $n_d=3$. Recent experiments along with theoretical ideas suggest, more specifically, the existence of local and medium-range structures that are *isostatically* rigid, in that they satisfy $n_c=n_d$ on the atomic scale exactly, not just on the average. A more detailed picture¹⁰⁻¹² then emerges, namely, that there are three elastic phases in network glasses: a floppy

or underconstrained phase when $\bar{r} < 2.40$ or $n_c < 3$; a stressed-rigid or overconstrained phase when $\bar{r} > 2.40$ or $n_c > 3$; and an intermediate or optimally constrained phase around $\bar{r} \sim 2.40$ (or $n_c=3$) as schematically illustrated in Fig. 1(a). This means that there are two elastic phase transitions in glasses as the count of Lagrangian constraints n_c increases: the first one at $r_c(1)$, a transition between the floppy phase and the rigid, but stress-free, intermediate phase, and the second at $r_c(2)$, between the intermediate phase and the stressed-rigid phase. Only in strictly random networks, a rare circumstance, can the two transitions coalesce, giving rise to a solitary elastic phase transition as was predicted by Phillips¹³ and Thorpe¹⁴ in the early 1980s [see Fig. 1(a)]. The usual behavior observed in chalcogenide glasses is the opening of intermediate phases (IPs) between floppy and stressed-rigid elastic ones, the “windows” as shown in Fig. 1(b). A number of properties of IPs have been studied in chalcogenide^{5-12,15-17} and chalcohalide glasses.^{18,19} In the former, the width of the IP is of the order of $\Delta\bar{r} \sim 0.13$. This range of \bar{r} is determined by the possibility of forming a stress-free backbone out of stoichiometrically different isostatically rigid local structures over a limited composition range.²⁰ For $\text{Ge}_x\text{Se}_{1-x}$ glasses, for example, such structures are chain segments of edge-sharing (ES) $\text{Ge}(\text{Se}_{1/2})_4$ and corner-sharing (CS) GeSe_4 tetrahedra. Numerical simulations¹⁵ confirm these results and give a width of the IP that is in reasonable agreement with experimental results on binary $\text{Ge}_x\text{Se}_{1-x}$ and $\text{Si}_x\text{Se}_{1-x}$ glasses.^{9,16,17} The IP in the two chalcohalide glasses, $\text{Ge}_{1/4}(\text{Se} \text{ or } \text{S})_{3/4-y}\text{I}_y$ have been examined in detail^{18,19} and are found to be rather narrow, $\Delta\bar{r} < 0.01$. The elastic phase boundary occurs near an iodine content $y=1/6$, and it lies almost precisely at the mean-field optimal constraint number $n_c=n_d$, we suppose because dangling ends, such as halogens, serve to cut characteristic rings

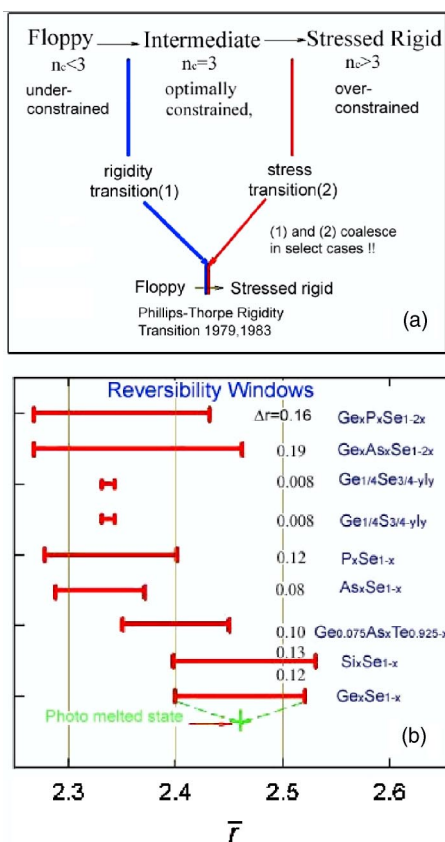


FIG. 1. (Color online) (a) Schematic of the three elastic phases observed in network glasses as a function of increasing connectivity. In select cases of truly random networks the intermediate phase collapses yielding a solitary elastic phase transition from a floppy to a stressed rigid. (b) Observed intermediate phases or reversibility windows in indicated binary and ternary glasses. In the two chalcogenide glasses $\text{Ge}_{1/4}(\text{S or Se})_{3/4-y}\text{I}_y$, note that the intermediate phase almost totally collapses.

where isostatic rigidity is nucleated. In consequence, there is only one chemical unit that is isostatic and nearly one composition where the backbone is composed predominantly of these units.^{18,19} Even in this extreme case, the experimental evidence¹⁹ points to the existence of a well-defined but rather narrow IP.

The characterization of “stress” in network glasses poses formidable issues both theoretically and experimentally. A particular challenge in this respect are the diamond anvil cell (DAC) pressure measurements of the behavior of Raman-scattering mode frequencies in binary Ge-S and Ge-Se glasses made in the mid-1980s by Murase and Fukunaga.^{21,22} They observed that the frequency of CS tetrahedral units near 200 cm^{-1} blueshifts as a function of hydrostatic pressure P only after P exceeds a threshold value P_c , which depends on the composition x . In the present work, we have confirmed the existence of the pressure thresholds in binary $\text{Ge}_x\text{Se}_{1-x}$ glasses and have established fairly comprehensive trends in $P_c(x)$. As x increases the threshold pressure $P_c(x)$ is found to decrease for $0.15 < x < 0.20$, to nearly vanish in the IP phase, $0.20 < x < 0.25$, and to increase again for $0.25 < x < 1/3$. The vanishing of P_c in the IP glasses, $0.20 < x < 0.25$, is a thought provoking feature for a glass because the

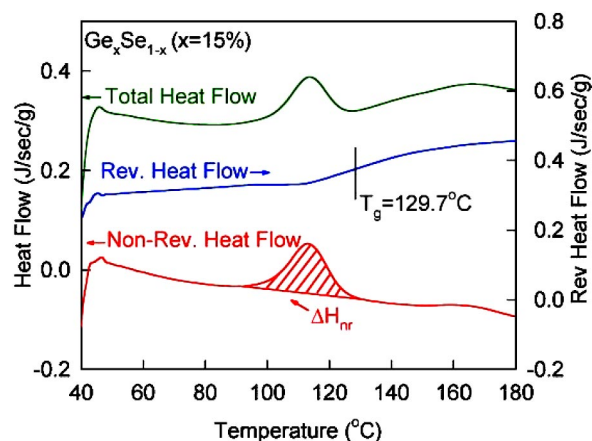


FIG. 2. (Color online) T -modulated DSC scan of a $\text{Ge}_{15}\text{Se}_{85}$ glass showing a $T_g = 129.7(1.0)^{\circ}\text{C}$, inferred from the inflexion point of the reversing heat flow signal. Note a sizable nonreversing heat flow ΔH_{nr} (shaded area) for this floppy-glass composition. The scan rate was $3^{\circ}\text{C}/\text{min}$ and the modulation rate was $1^{\circ}\text{C}/100\text{ s}$.

behavior is characteristic of a crystalline solid.

The outline of this paper is as follows: Sec. II describes the experimental details and presents the results on the present glass samples. In Sec. III, we discuss the results and comment on the distribution of stress in the three elastic phases of the present glasses. Section IV contains the summary and conclusions.

II. EXPERIMENTAL PROCEDURE AND RESULTS

A. Sample synthesis

Glasses were prepared^{16,17} by reacting the 99.999% pure Ge and Se in evacuated (6×10^{-7} Torr) fused quartz ampoules by slowly heating up to at 950°C . Melts were homogenized for several days at 950°C and then the temperatures were lowered to 50°C above the liquidus to equilibrate melts for a few hours prior to a water quench. Freshly quenched glasses were stored in a dry ambient and allowed to age at room temperature for periods ranging from 2 to 52 weeks. Thermal and optical measurements were initiated after the freshly quenched samples had aged at least two weeks.

B. Thermal characterization

A model 2920 MDSC from TA Instruments Inc, operated at $3^{\circ}\text{C}/\text{min}$ scan rate and $1^{\circ}\text{C}/100\text{ s}$ modulation rate was used^{5–10} to study enthalpy input in the vicinity of the glass transition temperature T_g . Temperature modulated differential scanning calorimetry (MDSC) allows separating the total enthalpy flow into a thermally reversing component, that is, one that follows the modulated temperature variation, plus a nonreversing component. This separation is illustrated in Fig. 2 for the case of a glass at $x=0.15$. The former captures quasiequilibrium thermodynamic properties of the metastable glass state, specifically its heat-capacity jump, the inflexion point of which is used to determine T_g ,^{2,5–10} whereas the latter component captures nonequilibrium effects, includ-

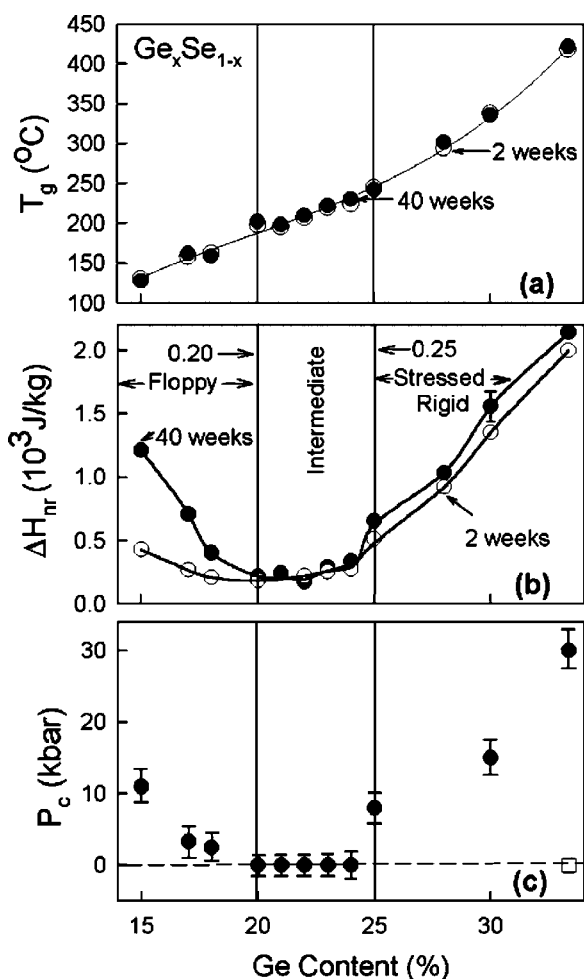


FIG. 3. Summary of MDSC results on Ge—Se glasses showing variations in (a) glass transition temperature $T_g(x)$ and (b) nonreversing enthalpy near T_g $\Delta H_{nr}(x)$. DAC results on variations in Raman pressure thresholds $P_c(x)$ is plotted in (c). The \square gives the P_c result on α - GeSe_2 . Note $\Delta H_{nr}(x)$ and $P_c(x)$ both vanish in the IP.

ing network configurational changes that occur upon softening of a glass. This component usually shows a peak as a precursor to T_g with the integrated area under the peak (ΔH_{nr} : nonreversing enthalpy) serving as a quantitative measure of the hysteretic nature of the transition. For glasses in the intermediate phase near $\bar{r} \sim 2.4$, the ΔH_{nr} term nearly vanishes and the glass transitions acquire a thermally reversing character.

Figures 3(a) and 3(b) show the MDSC results for $T_g(x)$ and $\Delta H_{nr}(x)$, respectively, for a range of x that includes all three elastic phases. The latter quantity almost vanishes in the IP^{16,17} but increases by an order of magnitude outside the IP, where it also shows significant changes under “aging,” whereas T_g changes relatively little in the same range of x . The MDSC results are included in Fig. 3 for comparison with the Raman pressure data obtained in the present work, which we present next.

C. Raman pressure experiments

Our DAC experiments used a Merrill-Bassett cell²³ with alcohol/methanol mixture (1:4) as a pressure-transmitting

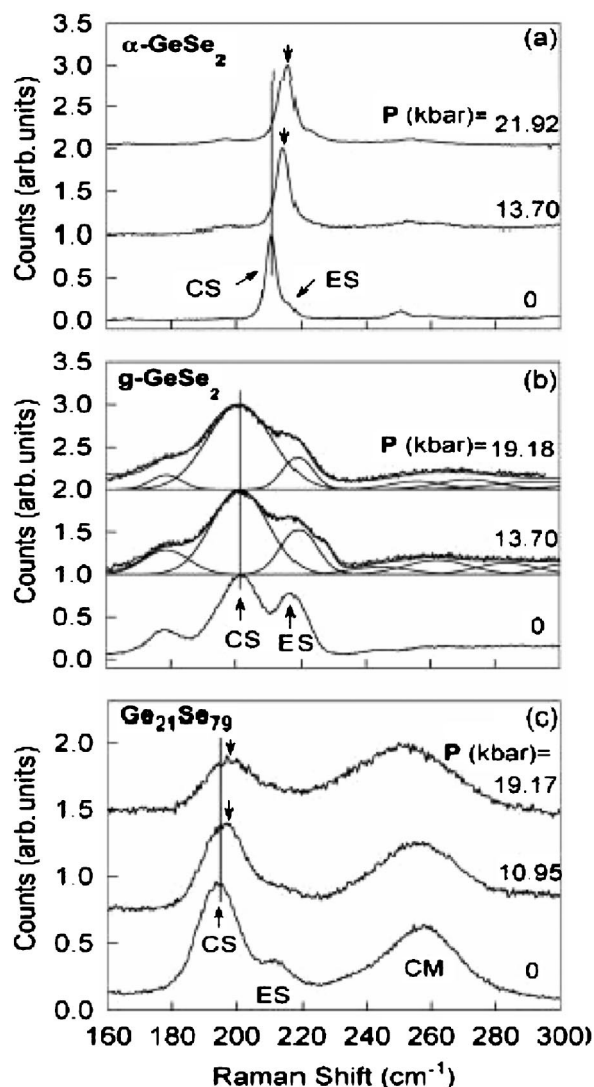


FIG. 4. Raman line shapes observed as a function of P in (a) α - GeSe_2 , (b) GeSe_2 glass, and (c) $\text{Ge}_{21}\text{Se}_{79}$ glass. Note $P_c=0$ in $\text{Ge}_{21}\text{Se}_{79}$ glass, a composition in the intermediate phase, but not in GeSe_2 glass (stressed rigid).

medium and ruby chips as a monometer.²⁴ Raman scattering was excited using a 647.1 nm Kr^+ laser line and the scattered radiation was analyzed using a model T64000 triple monochromator system from Jobin Yvon Inc., a charged coupled device detector and a microscope attachment.^{7,16,17}

External stress compresses interatomic bonds and, in general, blueshifts vibrational modes due to anharmonic effects. These pressure-induced changes show striking differences between crystalline and disordered structures. Figure 4 shows selected Raman line shapes observed at different values in P for (i) crystalline (α -) GeSe_2 , (ii) stoichiometric (stressed-rigid) GeSe_2 glass, and (iii) $\text{Ge}_{21}\text{Se}_{79}$ glass, which lies in the IP. In the crystal, the strongly excited 210 cm^{-1} phonon [related to the breathing mode of $\text{Ge}(\text{Se}_{1/2})_4$ tetrahedra] readily blueshifts upon application of pressure, but in GeSe_2 glass, the corresponding vibrational mode near 200 cm^{-1} does not shift until P exceeds 32 kbar.²¹ An estimate of the inverse participation ratio²⁵ of the 200 cm^{-1}

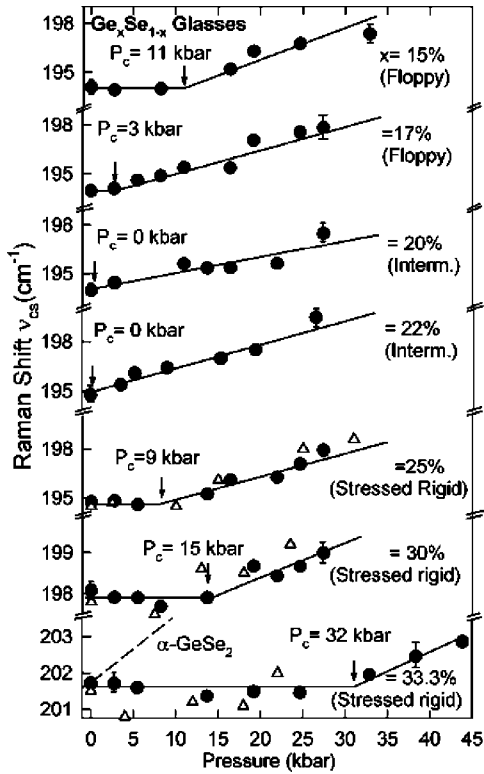


FIG. 5. Variations in the frequency of CS tetrahedral units as a function of P for select $\text{Ge}_x\text{Se}_{1-x}$ glasses studied in the present work \bullet . The results show the existence of pressure thresholds P_c in the stressed-rigid (25%, 30%, and 33.3%) and floppy (15%, 17%) glass compositions, but not in the IP (20%, 22%) ones. The At $x = 15\%$, a two-line fit (as shown) not only yields a lower χ -square than a one-line fit but also yields a slope $(d\nu/dP)$ that is nearly 65% larger and forms part of a general trend as x - or ν - decreases as sketched in Fig. 6. The Δ data points are taken from the work of Murase and Fukunaga (Ref. 21).

mode suggests that it is localized over a few tetrahedral units in the glass. Figure 5 summarizes the P -induced blueshifts of the CS mode at different glass compositions x . These shifts are reversible in P and were deduced by deconvoluting the observed line shapes.^{16,17} in terms of a superposition of Gaussians with unrestricted centroids, linewidths, and intensities.

The central result of the present work is that the threshold pressure $P_c(x)$ vanishes in the IP, $0.20 < x < 0.25$, but increases monotonically as x moves away from this phase both at $x > 0.25$ and at $x < 0.20$. Trends in $P_c(x)$ and $\Delta H_m(x)$ display striking similarities [Fig. 3(b) and 3(c)] in that both *vanish* in the IP. Compositional trends in the fractional blueshift $(d \ln \nu / dP)$ of the CS mode with mode frequency (ν_{CS}) at $P > P_c$ are summarized in Fig. 6(b). We find that the fractional response steadily decreases as x increases. These results can be put in perspective by plotting them on a universal plot of the response as a function of mode frequency as illustrated in Fig. 6(a). In Fig. 6(a) the data points of c - As_2S_3 are taken from the work of Zallen²⁶ and Weinstein and Zallen.²⁷ The data points on α - GeSe_2 and Ge-Se glasses are taken from the present work. In general, as the mode frequency increases the fractional response decreases be-

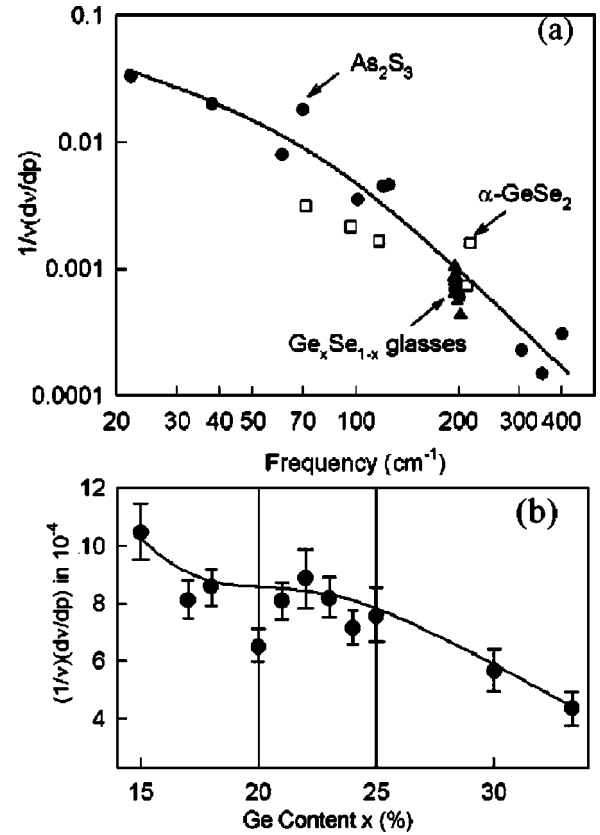


FIG. 6. (a) Fractional blue shift of the Raman vibrational modes in c - As_2S_3 \bullet ,²⁷ α - GeSe_2 \square and present $\text{Ge}_x\text{Se}_{1-x}$ glasses \blacktriangle plotted as a function of mode frequency. The steady decline in the response with increasing frequency reflects the higher restoring force associated with the covalent interactions in relation to the van der Waals ones. (b) Fractional blueshift of the CS mode frequency showing a steady decrease with glass Ge concentration x reflecting the increased rigidity of the network with increasing connectivity.

cause the restoring forces associated with higher mode frequencies are larger, being more covalent in nature.

III. DISCUSSION

A. $\text{Ge}_x\text{Se}_{1-x}$ glass molecular structure, onset of rigidity and pressure effects

The picture of glass structure evolving when Ge is alloyed in a Se base glass is that chains of Se_n are *stochastically* cross-linked by Ge atoms²⁸ to form CS GeSe_4 tetrahedral units at low x , i.e., in the $0 < x < 0.10$ range. These tetrahedra are isolated in Se_n chains, but with increasing x the relative spacing between these tetrahedra decreases and some edge-sharing (ES) tetrahedra begin to emerge^{16,17} as x increases to 0.10. Variations of $T_g(x)$ in the low x range yield a slope $(dT_g/dx = 4.5^\circ\text{C/at. \% Ge})$, which is in excellent accord with the parameter-free prediction $(dT_g/dx = T_o/\ln 2)$ of this slope based on stochastic agglomeration theory^{29,30} SAT. Here $T_o = 313\text{ K}$ or 40°C and represents the T_g of the base glass of pure Se. SAT has proved to be a powerful method to understand the connection between glass molecular structure and T_g . The structural interpretation of T_g suggested is that it

measures the connectedness of the network backbone. At higher x (>0.10), three distinct types of local structures are formed and include Se_n chains, ES-, and CS-tetrahedra. One then expects a superlinear variation of $T_g(x)$ to be manifested as more local structures appear in the backbone. A second-order elastic phase transition, viz., the rigidity transition, occurs when x increases to 0.20 or $r=r_c(1)=2.40$ as isostatically rigid local structures percolate. In the $0.20 < x < 0.25$ range, the backbone consists predominantly of two isostatically rigid local structures: CS GeSe_4 units and ES GeSe_2 units. The IP ambient pressure Raman scattering reveals that the optical elasticity [$\nu_{\text{CS}}^2(x)$] displays a power law $p=0.75(15)$. A first-order elastic phase transition, viz. stress transition, occurs when x increases to 0.26 or $r=r_c(2)=2.52$. The optical elasticity shows a first-order jump at the phase boundary followed by a power-law behavior in the stress-rigid phase ($0.26 < x < 1/3$) of $p=1.54(10)$. The latter result is in excellent accord with numerical simulations^{31,32} based on the standard model of glasses as random networks. With increasing x , a global maximum in T_g sets in near $x=1/3$. Here again SAT provides the most natural interpretation of the result in suggesting that the global connectivity of the backbone is compromised as nanoscale phase separation (NSPS)³³ sets in. In particular, both Raman and Mossbauer spectroscopy provide evidence for growth of Ge-rich ethane-like clusters (Ge_2Se_6) once $x > 0.31$. These clusters are most likely NSPS from the backbone³⁴ because in the thermal measurement one observes a drastic reduction in the slope, dT_g/dx , exactly at the same composition, i.e., at $x > 0.31$. Near $x \sim 1/3$, the slope dT_g/dx vanishes understandably because T_g has a global maximum.

Our Raman pressure measurements show a systematic increase in the scattering strength ratio of the CS to ES mode [$A_{\text{CS}}/A_{\text{ES}}(x, P)$] as a function of P at glass composition x in the $0.25 < x < 1/3$ range. Figure 7 gives an overview of the variations in the $A_{\text{CS}}/A_{\text{ES}}(x, P)$ ratio. It would be relevant to recall here that as $x > 0.25$, the CS $\text{Ge}(\text{Se}_{1/2})_4$ units become overconstrained ($n_c=3.67$), whereas ES $\text{Ge}(\text{Se}_{1/2})_4$ units remain optimally constrained ($n_c=3.0$). We interpret this increase as showing a shift in concentration from ES units to CS units as illustrated, for example, in Fig. 4 for GeSe_2 glass. If the energies of local structures containing an ES unit or a CS unit are raised under pressure from their $P=0$ values by an amount $\Delta\varepsilon_{\text{CS}}(P)$ and $\Delta\varepsilon_{\text{ES}}(P)$, respectively, the fractional concentration of these units will be given by the Boltzmann factor,

$$f = \exp\{[\Delta\varepsilon_{\text{ES}}(P) - \Delta\varepsilon_{\text{CS}}(P)]/T\} \quad (1)$$

with $\Delta\varepsilon_{\text{ES}}(P) > \Delta\varepsilon_{\text{CS}}(P)$. To obtain an estimate of the energy change we assume that the local structures have volume V_E and V_C , respectively, and that each is of order V_T , the volume of a $\text{Ge}(\text{Se}_{1/2})_4$ tetrahedron, say, $V_C = aV_T$ and $V_E = bV_T$. Because V_E contains two tetrahedral units [Fig. 8] we expect that $b > a$. Applying the macroscopic elastic energy formula,

$$\Delta\varepsilon_s(P) = P^2V/2K \quad (2)$$

with K representing the bulk modulus, one obtains the fraction of ES/CS units,

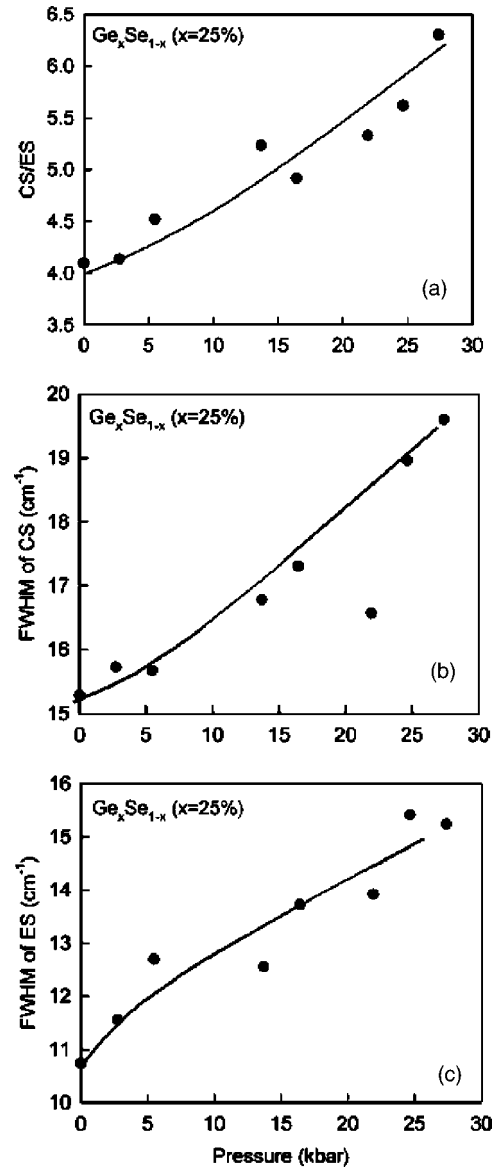


FIG. 7. Pressure-induced changes in the (a) CS/ES fraction (b) FWHM of CS mode and (c) FWHM of ES mode for a $\text{Ge}_{25}\text{Se}_{75}$ glass composition.

$$f \sim \exp[(b-a)\tau(P)/T], \quad (3)$$

where $\tau(P) = P^2V_T/2Kk_B$. Taking the value of the bulk modulus from the measured sound velocities³⁵ at these compositions, gives $K \approx 280$ kbar. Taking $V_T = 1.03 d^3$ where d is the Ge-Se distance, i.e., the sum of the ionic radii, ≈ 2.4 Å, gives $\tau(P) \approx 1.7(P/\text{kbar})^2k_B$. For example, at room temperature and $P=10$ kbar, $f \sim \exp[0.57(b-a)]$; and comparison with Fig. 9(a) gives the estimate: $V_E - V_C \approx 0.44 d^3$. This simplistic numerical exercise provides some *plausibility* to the strain-energy picture in that it gives the right pressure trend. It must not be pushed too far, however. The proportionality $\Delta\varepsilon(P) \propto P^2$ for a microscopic linear continuum is not exactly supported by the results of Figs. 7(a) and 9(a). The challenges in understanding issues such as these in glasses are formidable. One need only be reminded of the

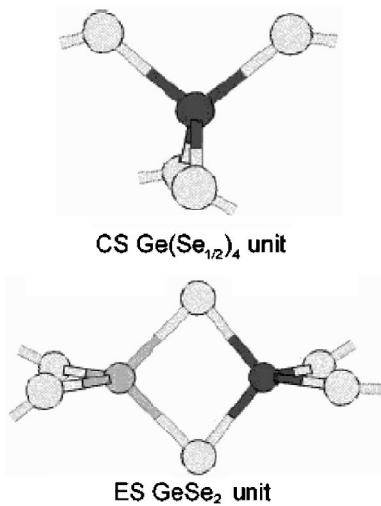


FIG. 8. Schematic drawing of (a) CS and (b) ES units. The four-fold coordinated atom is Ge while the two-fold coordinated one is Se.

two-level theory of low-temperature specific heat of amorphous solids,³⁶ which still lacks an agreed structural picture.

Raman linewidths display features related to the rigidity of the cross-linking tetrahedra in the backbone. The linewidth ($\Gamma=15\text{ cm}^{-1}$) of the CS mode at $x=0.25$ increases steadily with x to reach $\Gamma=16\text{ cm}^{-1}$ at $x=0.30$. GeSe_4 units, which are optimally constrained at $n_c=3$ [Ref. 20], predominantly populate the IP backbone, whereas overconstrained $\text{Ge}(\text{Se}_{1/2})_4$ units ($n_c=3.67$) are largely present in stressed-rigid glasses near $x=1/3$. Redundant bonds in the latter units result in larger distortions of Ge-Se bond lengths and Se-Ge-Se bond angles and contribute to the broadening of the CS mode with x . The second observation is that ES modes have a narrower Γ than CS modes in the IP (12 cm^{-1} versus 15 cm^{-1}) even though both units are optimally constrained ($n=3$). In a CS unit all of the Ge-Se bonds connect to the backbone as against only two bonds in ES units [Fig. 8]; so that the latter tetrahedra are more decoupled from stress-induced deformations of the backbone, which contribute to the linewidth.

Murase and Fukunaga²¹ suggested that P_c provides a measure of an internal pressure (stress), which must be exceeded by the applied pressure before vibrational modes blueshift. Redundant bonds in the stressed-rigid phase put the rest of the backbone under a large stress, and as expected, P_c steadily increases [Fig. 1(c)] with the concentration of such bonds as x increases to $1/3$. The mechanical equilibrium prevailing in the IP is also disrupted in floppy glasses¹⁶ as evidenced by P_c increasing as $x < 0.20$. In the floppy phase the fraction of polymeric Se_n chain fragments increases as $x \rightarrow 0$. These fragments are intrinsically underconstrained²⁰ ($n_c=2$) and exert an entropic pressure on the cross-linked segments.

B. Stress in network glasses: Theoretical considerations

The interpretation²¹ that P_c provides a measure of the internal stress that must be exceeded by the applied pressure is

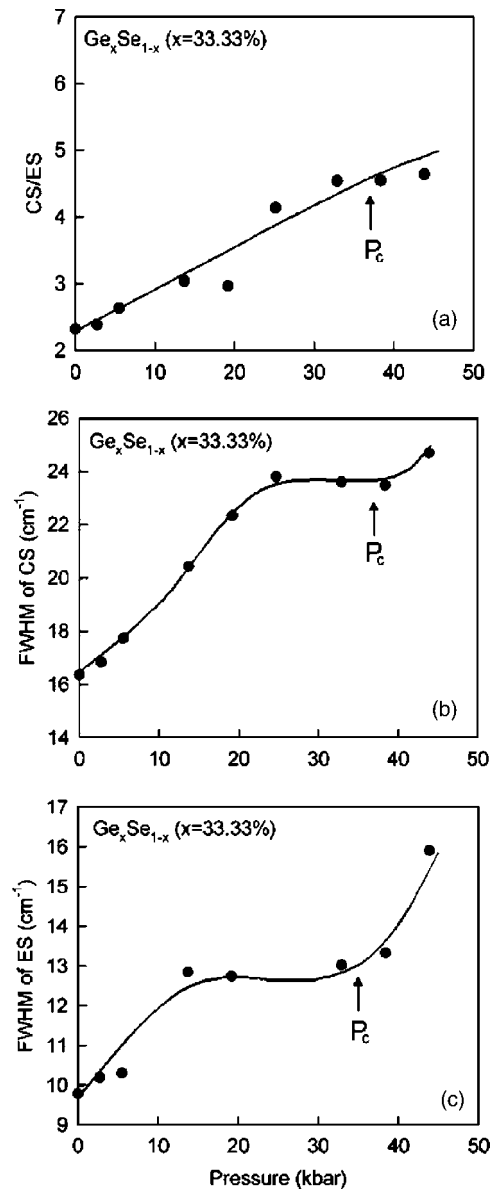


FIG. 9. Pressure-induced changes in the (a) CS/ES fraction (b) FWHM of CS mode, and (c) FWHM of ES mode for a GeSe_2 glass composition.

a phenomenological one. Obviously, especially for a disordered network, the atomic-scale distribution of bond bending and bond stretching cannot be represented³⁷ by P_c nor by a six-component stress tensor, as it could be for a Bravais crystalline lattice. More importantly, the suggestion that P_c is somehow related to a residual internal stress, such as from quenching, cannot explain threshold behavior, which is non-linear. In a linear elastic system stresses from external forces add linearly to internal stresses, as long as elastic limits are not exceeded. Furthermore, while the CS mode central frequency does not shift for $P < P_c$, the mode linewidth [Fig. 8(b)] increases over 40% in that pressure range.

Even in the IP where P_c vanishes, the linewidth is seen [Fig. 4] to be more sensitive to external pressure than is the change in the CS mode central frequency. This probably has its origin in the relatively weaker bond-bending forces in

relation to bond-stretching forces that allow larger bond-angle distortions relative to bond length changes. The importance of bond-bending interactions³⁸ is central in understanding the glass-forming tendency of covalent systems. Angular distortions mix the CS modes of a particular $\text{Ge}(\text{Se}_{1/2})_4$ tetrahedron with modes of different symmetry (including Raman-inactive modes) of higher and lower frequencies than ν_{CS} , thereby shifting ν_{CS} either up or down, depending on the particular local distortion, and producing an inhomogeneous line broadening.

The question remains: What kinds of distortions in an inhomogeneous network are capable of producing a nonlinear elasticity threshold? One possibility is internal contact-like behavior in which both rigid structures and weaker structures coexist but with weak effective contact between them. Initially, the rigid subsystem provides a buffer against the external pressure, but eventually a strong contact develops in a highly nonlinear expansion of the contact area, and further pressure increase is transmitted more or less homogeneously throughout the entire system.

C. Stress-free nature of the intermediate phase

The IP ($0.20 < x < 0.25$), though comprising disordered networks, has some similarity to crystals. Both form space-filling networks that are homogeneous at a mesoscopic level. The space-filling property of the IP backbones is revealed by a minimum in their molar volumes.³⁹ In glasses, the local and medium-range structures prevailing in the IP are isostatically rigid, with no redundant bonds^{10,15,18} to produce stress. Therefore, IPs are not made up of segregated regions of different elasticity. This picture of relative homogeneity of stress distribution at intermediate ranges is consistent with the fact [Fig. 3] that P_c is zero in the otherwise quite different systems, $\alpha\text{-GeSe}_2$ and the glass IP. These observations suggest that absence of a pressure threshold as well as the absence of appreciable aging effects are part of a broader set of consequences of IP glasses being in a state of metastable *mechanical-equilibrium*, which itself derives from the optimal network connectedness of having *atomically exact* constraint balance $n_c = n_d$. In contrast, we might better think of P_c as being a measure of intermediate-range stress *inhomogeneity* rather than as a macroscopic residual stress.

D. Atomic size and stress distribution in network glasses

Our choice of the Ge-Se binary in the present study deserves a final comment. The Ge-Se binary is an ideal system for investigations of network stress in a disordered system by Raman scattering. First, the three elastic phases in this binary are well documented.¹⁶ Second, local stress compensation effects because of atomic-size mismatch are minimized because the atomic size of Ge (1.22 Å) and Se (1.17 Å) are nearly the same. This has the important consequence that stress is globally distributed, and the frequency of the Raman-active CS mode can serve as a good representation of backbone stress. When constituent atoms have different sizes, however, local stress relief can occur and preclude a reliable measurement of the backbone stress from a measurement of a Raman-mode frequency alone.

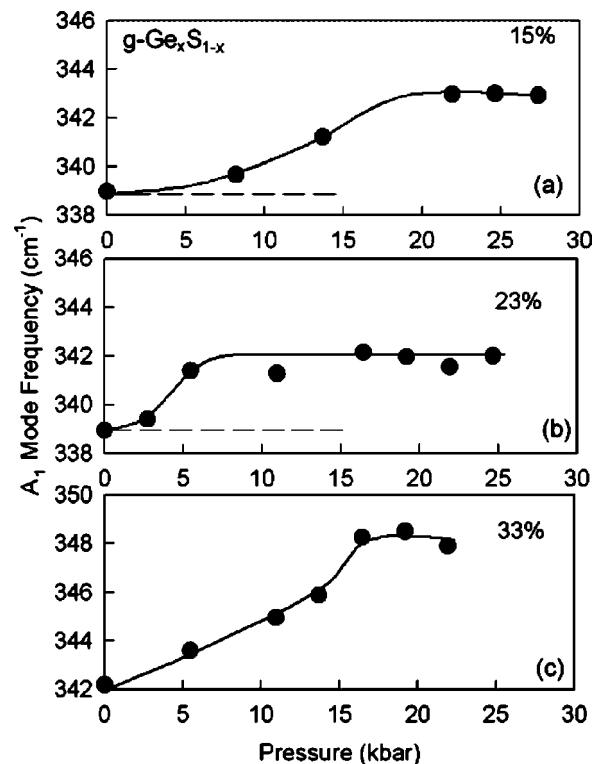


FIG. 10. Pressure induced changes in CS mode frequency of $\text{Ge}_x\text{S}_{1-x}$ glasses at (a) $x=15\%$, (b) 23% , and (c) 33% showing that $P_c \sim 0$ in all three glass compositions. See text for details.

The above ideas are strongly supported by the DAC measurements on corresponding binary $\text{Ge}_x\text{S}_{1-x}$ glasses. Figure 10 shows the pressure variations in mode frequency of the CS $\text{Ge}(\text{S}_{1/2})_4$ tetrahedral units at $x=15\%$, 23% , and 33% in panels Figs. 10(a)–10(c), respectively. These compositions belong, respectively, to the floppy (15%), intermediate (23%), and stressed-rigid phases (33%) of binary Ge-S glasses. The behavior seen in Fig. 7 is quite different from the systematic patterns of Fig. 5, which we take to support the previously mentioned role of relative atomic sizes. The S anion size of 1.02 Å is significantly smaller than that of the Ge cation. A pattern of stress relief by the tetrahedral units distorting locally should be reflected in the distribution of mode frequencies from place to place in the network that contributes to an inhomogeneous broadening of the CS mode in the Raman scattering. Indeed, we find that the linewidth (full width at half maximum) of the CS mode in binary $\text{Ge}_x\text{S}_{1-x}$ glasses are nearly *twice as large* as in corresponding selenide glasses. These results suggest that Raman-active CS mode frequency as a probe of network stress in glassy networks can only be relied upon when the atomic size of the network-forming atoms are nearly the same. Thus, glass systems based on the Ge-As-Se or the Si-P-S ternaries or the P-S binary would appear to be ideally suited for Raman pressure measurements.

IV. CONCLUSIONS

In conclusion, pressure effects in Raman scattering on the $\text{Ge}_x\text{Se}_{1-x}$ binary highlight a feature of the IP ($0.20 < x$

<0.25); threshold-pressures (P_c) above which modes blue-shift are found to *vanish* in this phase. The behavior ($P_c = 0$) is characteristic of a crystalline solid and probably of window glass as well⁴⁰ and suggests that glassy networks in IPs are present in a state of mechanical equilibrium that is connectivity driven. Glass compositions in the IP are viewed to be self-organized, and the nonaging of the nonreversing enthalpy (ΔH_{nr}) in this phase appears to be a consequence of that equilibrium. Nonaging of self-organized disordered networks is a basic idea that has profound technology implica-

tions, including the design of a different generation of thin-film gate dielectrics.⁴¹

ACKNOWLEDGMENTS

We thank S. V. Sinogeikin for assistance with the high-P experiments. This work is supported by NSF Grants No. DMR-01-01808 and No. 04-56472.

*Present address: Department of Electrical Engineering, California Polytechnic State University, San Luis Obispo, CA 93407, USA.

†Present address: Raman and X-ray Fluorescence Group, HORIBA Jobin Yvon Inc., 3880 Park Ave, Edison, NJ 08820-3012, USA.

¹P. G. Debenedetti and F. H. Stillinger, *Nature (London)* **410**, 259 (2001).

²P. Boolchand, D. G. Georgiev, and M. Micoulaut, *J. Optoelectron. Adv. Mater.* **4**, 823 (2002).

³A. C. Angell, *Science* **267**, 1924 (1995).

⁴J. C. Phillips, *Rep. Prog. Phys.* **59**, 1133 (1996).

⁵S. Chakravarty, D. G. Georgiev, P. Boolchand, and M. Micoulaut, *J. Phys.: Condens. Matter* **17**, L1 (2005).

⁶D. G. Georgiev, P. Boolchand, and M. Micoulaut, *Phys. Rev. B* **62**, R9228 (2000).

⁷Tao Qu, D. G. Georgiev, P. Boolchand, and M. Micoulaut, *Mater. Res. Soc. Symp. Proc.* **754**, 111 (2003).

⁸Tao Qu and P. Boolchand, *Philos. Mag.* **85**, 875 (2005).

⁹D. Selvanathan, W. J. Bresser, and P. Boolchand, *Phys. Rev. B* **61**, 15061 (2000).

¹⁰P. Boolchand, D. G. Georgiev, and B. Goodman, *J. Optoelectron. Adv. Mater.* **3**, 703 (2001).

¹¹J. C. Phillips, *Phys. Rev. Lett.* **88**, 216401 (2002).

¹²M. F. Thorpe, D. J. Jacobs, M. V. Chubynsky, and J. C. Phillips, *J. Non-Cryst. Solids* **266–269**, 859 (2001).

¹³J. C. Phillips, *J. Non-Cryst. Solids* **34**, 153 (1979).

¹⁴M. F. Thorpe, *J. Non-Cryst. Solids* **57**, 355 (1983).

¹⁵M. Micoulaut and J. C. Phillips, *Phys. Rev. B* **67**, 104204 (2003).

¹⁶P. Boolchand, X. Feng, and W. J. Bresser, *J. Non-Cryst. Solids* **293–295**, 348 (2001).

¹⁷X. Feng, W. J. Bresser, and P. Boolchand, *Phys. Rev. Lett.* **78**, 4422 (1997).

¹⁸Y. Wang, J. Wells, D. G. Georgiev, P. Boolchand, K. Jackson, and M. Micoulaut, *Phys. Rev. Lett.* **87**, 185503 (2001).

¹⁹F. Wang and P. Boolchand, in *Non-Crystalline Materials for Optoelectronics*, edited by G. Lucovsky and M. Popescu (INOE, Bucharest 2004), Vol. 1, p. 15. Also see Fei Wang, Ph.D. thesis, University of Cincinnati, 2004.

²⁰For a $\text{Ge}_x\text{Se}_{1-x}$ glass, taking Ge and Se to be four- and two-fold coordinated, the $\bar{r} = 4x + 2(1-x) = 2(1+x)$; In 3D, the count of bond-stretching ($r/2$) and bond-bending ($2r-3$) constraints for an atom having r neighbors, yields a count of constraints/atom of $n_c = (5/2)r - 3$ constraints, i.e., 7 for Ge and 2 for Se. For a network of CS GeSe_4 units (bridging across a Se-Se pair), we thus have, $n_c = (7 + 2 \times 4) / 5 = 3$. For a network of CS $\text{Ge}(\text{Se}_{1/2})_4$

units bridging across Se atoms, the count $n_c = [7 + (2 \times 1/2 \times 4)] / 3 = 3.66$. On the other hand, in ES GeSe_2 , the Ge and Se bond-angle constraints are *not* independent. Thus, we if count seven constraints for Ge, then we must count 1 constraint per Se atom, yielding $n_c = (7 + 1 \times 2 \times \frac{1}{2}) / 3 = 3$. Both CS GeSe_4 and ES GeSe_2 are isostatically rigid but CS $\text{Ge}(\text{Se}_{1/2})_4$ units stressed rigid.

²¹K. Murase and T. Fukunaga in *Optical Effects in Amorphous Semiconductors*, edited by P. C. Taylor, and S. G. Bishop (American Institute of Physics, New York, 1984) p. 449.

²²K. Murase, and T. Fukunaga in *Mat. Res. Soc. Sym. Proc. 61*, edited by F. L. Galeener, D. L. Griscom, and M. J. Weber (Materials Research Society, Pittsburgh, 1986) p. 101.

²³U. Venkateswaran, M. Chandrasekhar, and H. R. Chandrasekhar, *Phys. Rev. B* **30**, 3316 (1984).

²⁴A. Jayaraman, *Rev. Mod. Phys.* **55**, 65 (1983).

²⁵X. Zhang and D. A. Drabold, *Phys. Rev. B* **62**, 15695 (2000).

²⁶R. Zallen, *Phys. Rev. B* **9**, 4485 (1974).

²⁷B. A. Weinstein and R. Zallen in *Light Scattering in Solids IV*, Topics in Applied Physics, Vol. 54, edited by M. Cardona and G. Guntherodt (Springer Verlag, Berlin, 1984) p. 463.

²⁸W. Bresser, P. Boolchand, and P. Suranyi, *Phys. Rev. Lett.* **56**, 2493 (1986).

²⁹R. Kerner and M. Micoulaut, *J. Non-Cryst. Solids* **210**, 298 (1997).

³⁰M. Micoulaut, *Eur. Phys. J. B* **1**, 277 (1998).

³¹H. He and M. F. Thorpe, *Phys. Rev. Lett.* **54**, 2107 (1985).

³²D. S. Franzblau and J. Tersoff, *Phys. Rev. Lett.* **68**, 2172 (1992).

³³P. Boolchand, D. G. Georgiev, T. Qu, F. Wang, L. Cai, and S. Chakravarty, *C. R. Chim.* **5**, 713 (2002).

³⁴P. Boolchand and W. J. Bresser, *Philos. Mag. B* **80**, 1757 (2000).

³⁵S. S. Yun, H. Li, R. L. Cappelletti, R. N. Enzweiler, and P. Boolchand, *Phys. Rev. B* **39**, 8702 (1989).

³⁶S. R. Elliott, *Physics of Amorphous Solids*, 2nd Ed. (Longmans, Green, NY, 1990) p. 239.

³⁷S. Alexander, *Phys. Rep.* **296**, 65 (1998).

³⁸M. Micoulaut and P. Boolchand, *Phys. Rev. Lett.* **91**, 159601 (2003).

³⁹A. Feltz, H. Aust, and A. Bleyer, *J. Non-Cryst. Solids* **55**, 179 (1983).

⁴⁰R. Kerner and J. C. Phillips, *Solid State Commun.* **117**, 47 (2001).

⁴¹G. Lucovsky and J. C. Phillips, *Appl. Phys. A: Mater. Sci. Process.* **78**, 453 (2004).